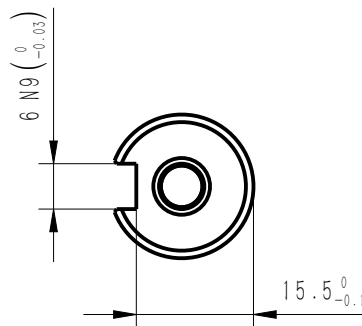
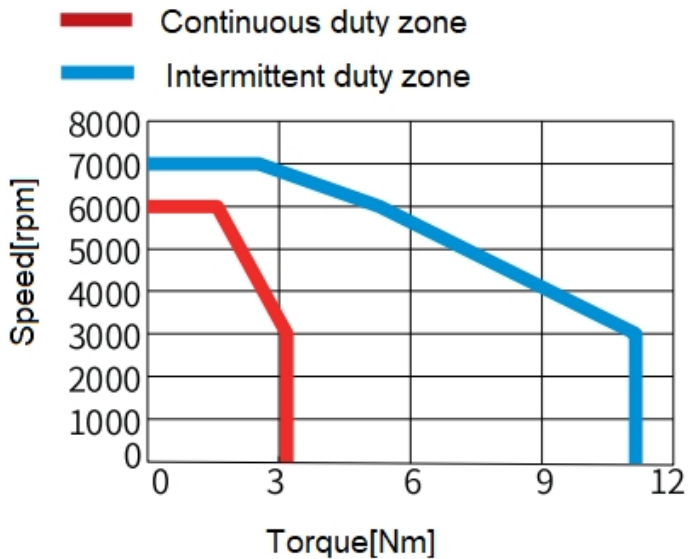
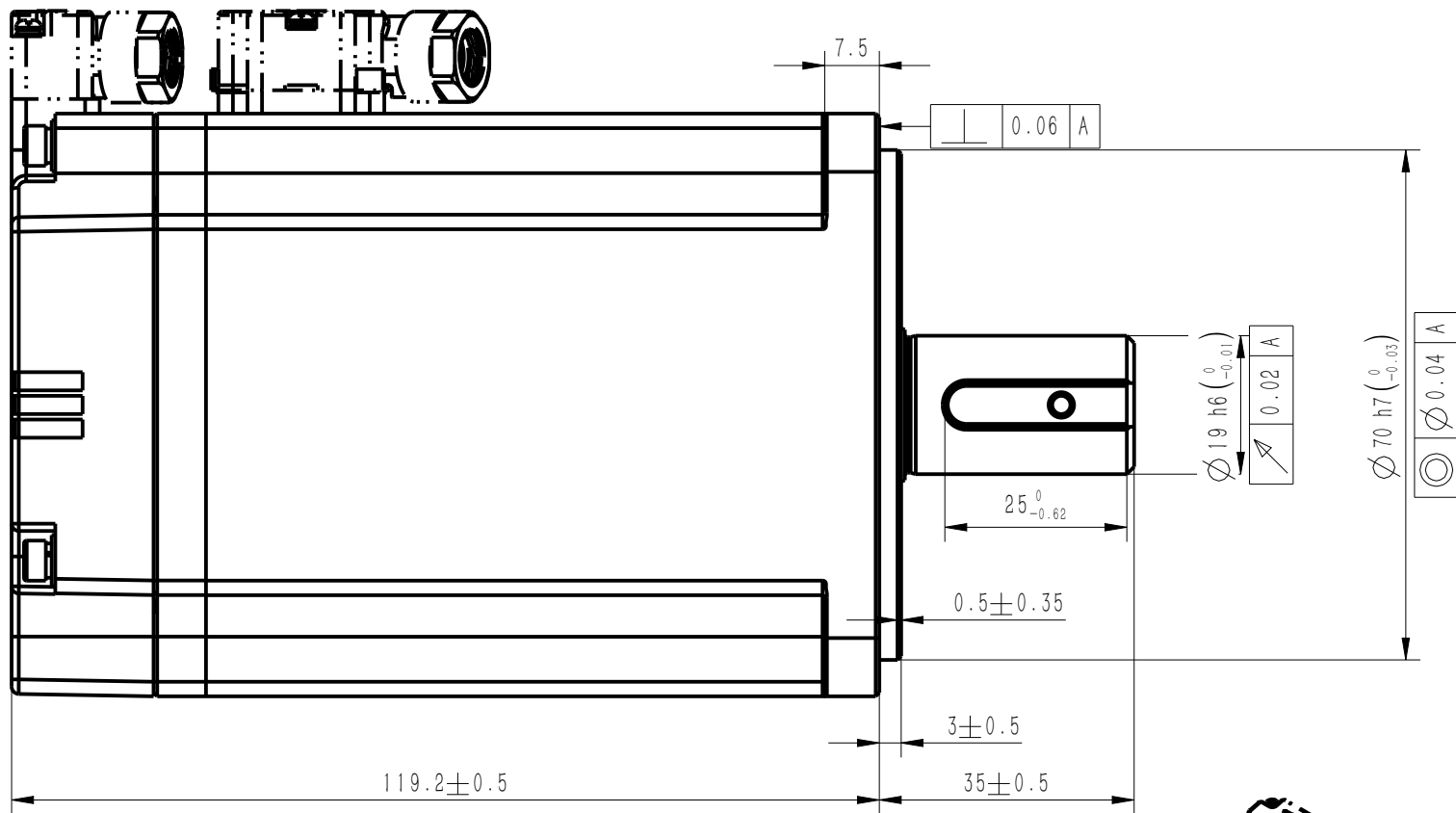
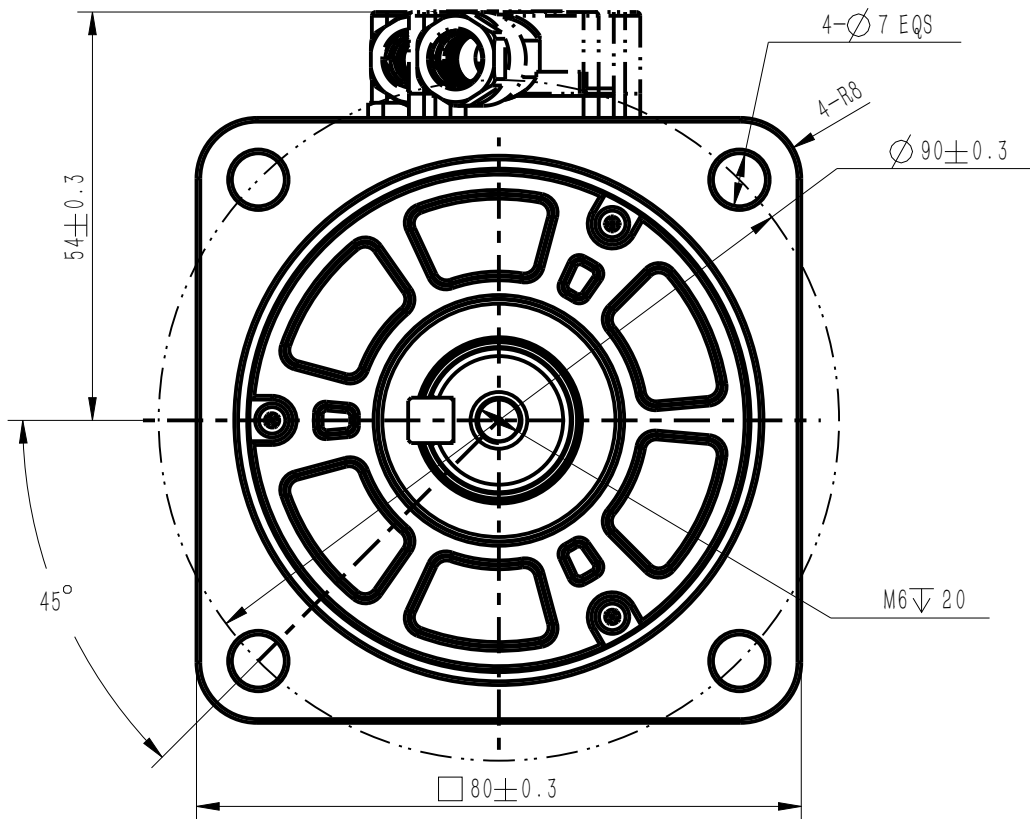


正样
2023.09.26
B00

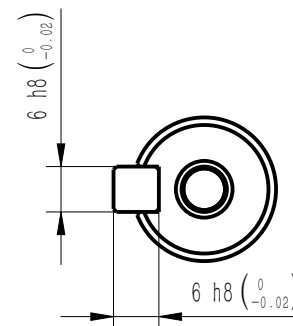
Copyright: Copyright infringement reserved

外部公开

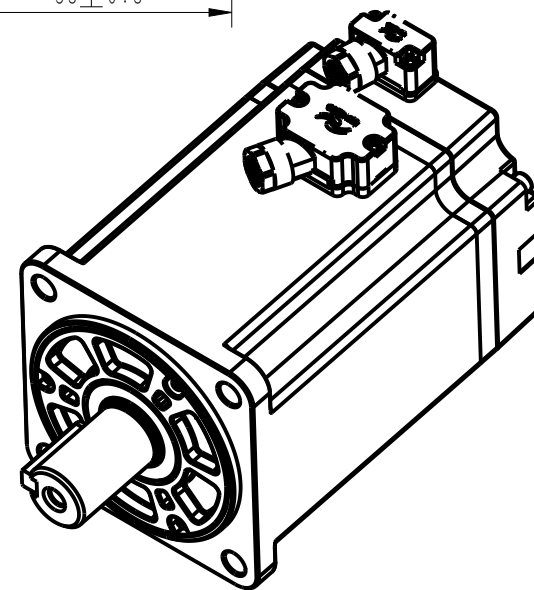
Unit: Millimeter (mm)



Dimension of shaft end



Dimension of shaft end with key



Basic function parameters	
Rated power KW	1
Rated voltage V	220
Rated current A	≤6.2
Peak current at rated speed A	≤24
Rated torque Nm	3.18
Peak torque at rated speed Nm	11.1
Rated speed rpm	3000
Max speed rpm	7000
Rotor inertia kg·cm2	0.82
Encoder resolution	26bit
Insulation class	F
Protection level	IP67
Static torque of brake Nm	/
Brake power supply	/
Duty cycle	S1
Radial line load N	≤392
Axial load N	≤147

				Motor Outline Drawing			01118364-WX	
B00	New Archive	/	20230901					
Version	Change method	Changed by	Date					
Design	/			<div></div>			Mark	INOVANCE
Check	/							
Craft	/							
Verify	/			Weight	Scale	Version	Page 1 of 1	
Standardization	/			2.61kg	1:1	B00	Model	MS1H1-10C30CB-A631R-INT
Approve	/							